

## LEARN Harm Reduction Application Spring 2021

This document is to be used as a guide. All applications must be completed via online submission at [www.gileadcompass.com](http://www.gileadcompass.com). If you need assistance or accommodations, please contact Katie McCormick ([kamccor5@central.uh.edu](mailto:kamccor5@central.uh.edu)).

### **BACKGROUND**

#### **Program Description**

Leading with Education, Advocacy & Resistance with our Neighbors (LEARN) is SUSTAIN Wellbeing COMPASS Coordinating Center's shared learning opportunities to build organizational leadership and support organizational transformation. The primary goal of LEARN is to build knowledge, capacity, expertise and leadership in a particular topic area. A second important goal of LEARN is to strengthen community networks through enhanced collaboration between participating organizations. Each cohort of LEARN is centered on a different content area. SUSTAIN is excited to announce the launch of our third cohort of LEARN Harm Reduction (HR), which will be developed and facilitated in collaboration with Sandra Chavez! Sandra is an expert community-based consultant who has 15 years of experience working at the intersections of HIV, housing and harm reduction in Texas, and is thrilled to facilitate another cohort of LEARN HR! **No prior knowledge around harm reduction is required to participate.**

#### **About Harm Reduction**

Harm reduction is defined as both a movement for social justice, as well as policies, practices, and programs that center the rights and autonomy of people who use drugs. Additionally, harm reduction recognizes the role of structural oppression and social inequities that impact individuals, and aims to reduce the negative consequences associated with substance drug use at the individual, community and systemic levels. Harm reduction is person-centered and not a one-size-fits-all model, thus there is no prescribed way of practicing harm reduction. Instead, harm reduction is guided by a set of eight core principles which are made available by [the National Harm Reduction Coalition](#). Though harm reduction emerged from the context of injection drug use in the 1980's, harm reduction has been implemented across a range of settings (i.e., interventions that promote strategies to reduce potential risks for people who exchange money, drugs or goods for sex; programs that reduce tobacco use). A goal of LEARN HR is to educate and equip HIV service leadership and providers throughout the South with knowledge and skills needed to implement harm reduction in their organizations.

After LEARN Harm Reduction, participants will be able to:

- **Recognize** the realities of structural oppression (ex: racism, poverty, past trauma) and other social inequalities that affect people's vulnerability and capacity for dealing with harm.
- **Practice** non-judgmental, non-coercive service provision with communities they serve.
- **Apply** new harm reduction knowledge by creating and implementing a harm reduction-centered project.

### About LEARN

#### LEARN HR has 3 different but intersecting components: Meetings, Project and Deliverables/Reporting.

##### *Meetings*

LEARN Harm Reduction consists of the following over the course of 6 months:

- Bi-monthly virtual cohort sessions
- Monthly one-on-one virtual coaching sessions
- An extended virtual convening (to emulate the in-person convening)

Four to six organizations will be selected for each cohort. Organizations can expect to contribute up to 6-8 hours a month.

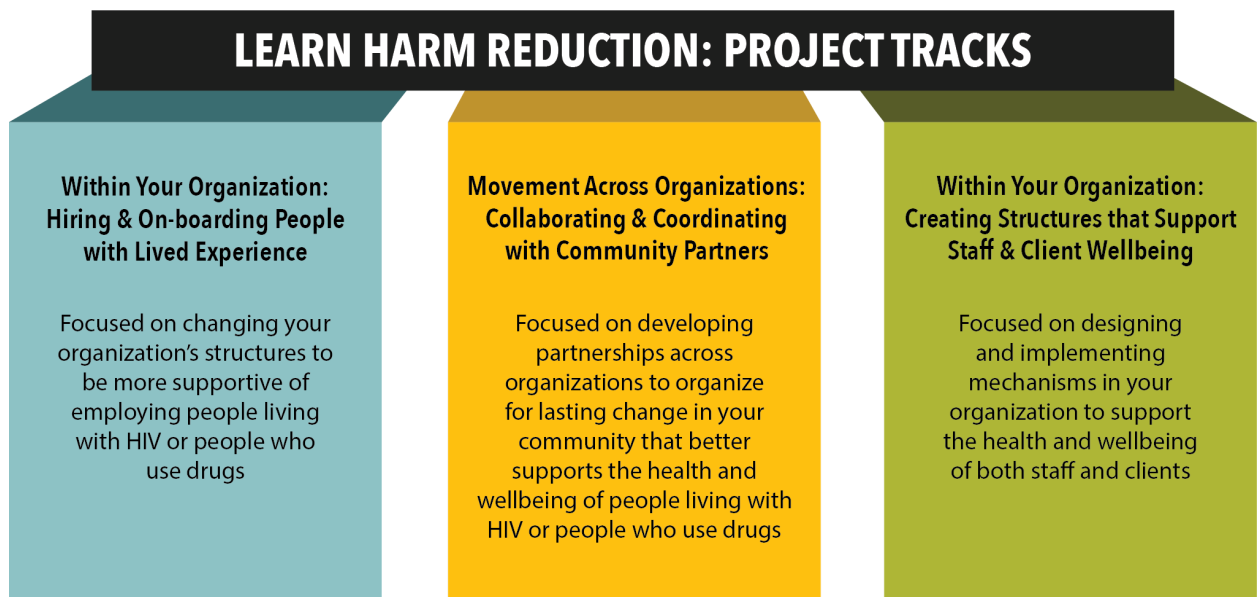
##### *Project*

Organizations should be prepared to initiate and complete a project **centered around harm reduction** that they would like to address in a collaborative, shared learning environment. Organizations will receive a \$10,000 stipend to support the implementation of their project.

##### *Tracks*

Because LEARN is centered around transforming organizational practice, projects should focus on **organizational change**. All organizations are expected to collaborate with people living with HIV and/or people who use drugs in the design, implementation and evaluation phases.

## LEARN HARM REDUCTION: PROJECT TRACKS



### *Deliverables and Reporting*

Applicants do not need to have a project plan at this stage, as selected organizations will design and implement their project with the support of the cohort and facilitators. Selected organizations will design their project plan in the first 1-2 months (June & July) of LEARN, and implement their projects in the remaining 3-6 months (August-November). Selected organizations should expect to complete and submit a product/deliverable, as well as a Project Report in the final month of LEARN (November). The product/deliverable will vary by the selected project and decided in partnership between the organization and coach. Selected organizations will work on related tasks in partnership with the LEARN HR coach.

### Eligibility

Organizations interested in participating in LEARN Harm Reduction must have a primary organizational purpose of serving people living with HIV and demonstrate a willingness to. Organizations that demonstrate a commitment to cultivating leadership of Trans, Women, Latinx, Black, Immigrant and Lesbian, Gay and Bisexual communities will be prioritized, along with those who serve rural communities and communities most impacted by the HIV epidemic (see [Ending the HIV Epidemic jurisdictions](#)).

Organizations of all sizes are encouraged to apply, but for those that have more than 30-40 staff members, we ask that you specify your application to a particular department of your organization. **No prior knowledge around harm reduction is required to**

**participate.**

Organizations eligible to participate in LEARN Harm Reduction must:

- Aim to increase engagement of people who receive services (i.e., people who use drugs, people living with HIV, etc.) in a more meaningful way;
- Have a primary organizational purpose of reducing new HIV infections and/or improving the health of people living with HIV by utilizing a harm reduction approach;
- Have an idea for a project centered around harm reduction that they would like to work on throughout LEARN;
- Be a non-profit, tax-exempt organization as set forth in section 501(c)(3) of the Internal Revenue Code. Applicants that do not hold 501(c)(3) status must have a fiscal sponsor to apply;
- Be located in one of the twelve Southern states (AL, AR, FL, GA, KY, LA, MS, NC, OK, SC, TN, TX); and
- Identify and commit 2 people within the organization (1 decision-maker and 1-2 program staff) that agree to participate fully in each session.

**Funding**

Organizations will receive a \$10,000 stipend to support costs related to implementing their harm reduction project.

**Allowable Expenses**

It is appropriate to use LEARN funds to pay for things like materials, meeting expenses, printing, graphic design services, etc. However, there are prohibited expenses. You cannot use the funds to pay for or offset the cost of any of the following:

- Medications or purchasing of medications
- Direct medical expenses, including lab expenses
- Existing deficits of organization
- Biomedical research or clinical trials
- Projects that directly influence or advance Gilead Science's business, including purchase, utilization, prescribing, formulary position, pricing, reimbursement, referral, recommendation or payment for products
- Individuals, individual health care providers, or physician group practices
- Events or programs that have already occurred
- Government lobbying activities

**Please Note:** Reimbursement for items/services purchased or initiated prior to the submission of this funding request *will not be supported*. Organizations that do not complete final assessments and/or reports, or utilize funds for the intended purpose will

not be eligible to receive any additional funding from the SUSTAIN Wellbeing COMPASS Coordinating Center.

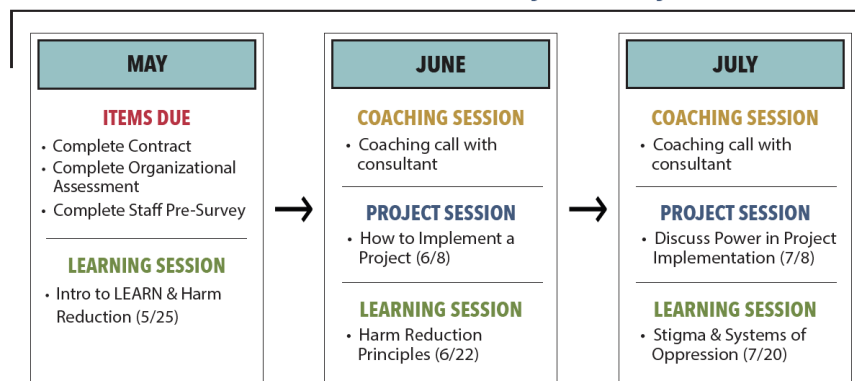
## LEARN: HARM REDUCTION 2021 ROADMAP

More details will be shared with participating organizations throughout the grant period. This roadmap is subject to change.

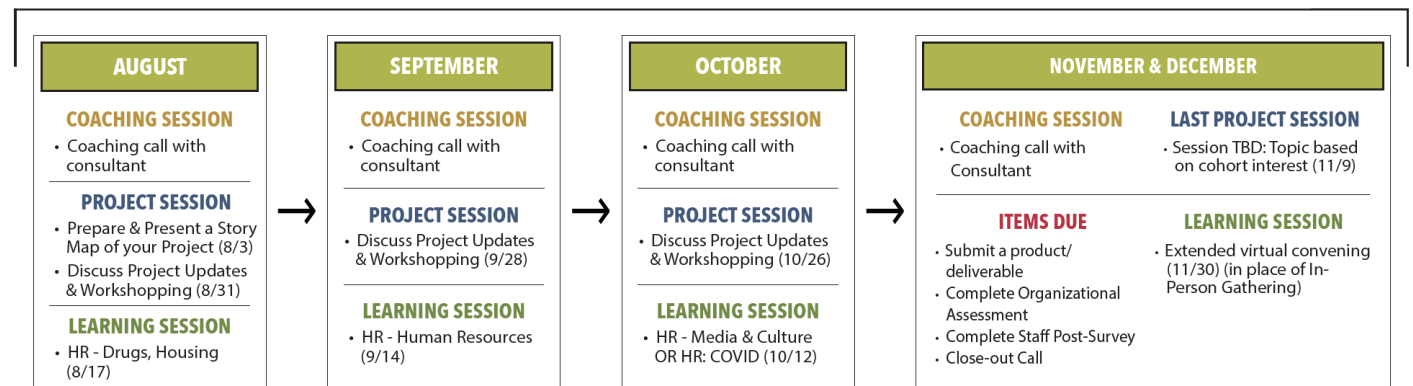
### PROJECT PRE-IMPLEMENTATION (May 2021 - July 2021)

*Coaching Sessions will be scheduled at each organization's convenience.*

*Cohort Sessions (Project and Learning Sessions) will take place from 1-3pm CST (2-4pm EST) on scheduled dates.*



### PROJECT PRE-IMPLEMENTATION (August 2021 - December 2021)



Supported by grant funding from Gilead Sciences Inc. Gilead Sciences, Inc. has had no input into the development or content of these materials.

## APPLICATION

### Instructions

A complete application for LEARN includes:

- Completed responses to the application questions;
- Uploaded 501(c)(3) Verification or letter from fiscal sponsor;
- Names and emails for participating staff; and
- Uploaded organizational logo.

Applications should be completed ONLINE and submitted through the COMPASS Initiative website. Required attachments (501(c)(3)/fiscal sponsor letter; organizational logo) should be uploaded in the appropriate place in the application. Applications received after 11:59 EST (10:59 CST) on the due date will not be reviewed or considered for participation.

---

### Logistical Details

LEARN Harm Reduction consists of multiple sessions over 6 months in 2021 with all participating organizations. Specific details of each component are listed below:

- **Virtual Cohort Session Dates:** Cohort sessions will take place for 2 hours twice a month (**Tuesdays from 1-3pm CST/2-4pm EST**) beginning in May through November on the following dates:
  - May 25
  - June 8 & June 22
  - July 6 & July 20
  - August 3, August 17 & August 31
  - September 14 & September 28
  - October 12 & October 26
  - Nov 9 & Nov 30
- **Coaching Session Dates:** Each organization selected to participate will receive individualized coaching from LEARN facilitators over the course of 6 months (one hour long session per month, 6 sessions total). These will be scheduled according to the availability of both the organization and facilitator.
- **In Person Convening Date and Location:**
  - LEARN typically consists of an in-person gathering in which the cohort and facilitators get to be with one another for more training and community building. However, due to the COVID-19 pandemic and in an effort to prioritize the health and wellbeing of our partners, we will NOT host an in-person gathering this year. We will instead host a virtual

alternative with details, dates and times to be collectively decided by the selected cohort.

- **Application Deadline: May 1st, 2021 at 11:59pm EST (10:59 CST)**

---

Application Questions (\*required)

*General Information*

Organization Contact Information

- Organization Name\*
- Street Address\*
- Apt/Suite/Office
- City\*
- State\*
- Zip Code\*
- County\*
- Phone Number\*
- Email Address\*
- Website
- Is this location a site of a larger organization?\* Y/N
- Organization's Mission
- Total Number of Staff in Organization

Organization Type\*

- Community Based Organization (CBO)/Social Service Organization
- AIDS Service Organization (ASO)
- HIV Medical Care Organization
- Federally Qualified Health Center
- Ryan White Part C Clinic
- Community Health Center/Medical Clinic
- Health Department
- Educational Organization/Institution
- Hospital
- Religious Organization
- Foundation
- Other, please specify: \_\_\_\_\_

Please upload your organization's logo.\*

*Organization Structure*

Is your organization recognized as a 501(c)(3) organization?\* Y/N



- If yes: What is your Employer Identification Number (EIN)?\*
- If no: What organization will serve as your fiscal sponsor for this opportunity?\*
- Who is the contact person at your sponsoring organization?
  - Full Name\*
  - Title\*
  - Phone Number\*
  - Email Address\*

Description of Area(s) Served\* (check all that apply)

- Rural
- Urban
- Suburban
- Reservation-based
- Statewide
- Regional
- National
- International
- Other, please specify: \_\_\_\_\_

Demographics of Organization Leadership\*

Please describe the demographic makeup of your organization's leadership. Please give the title of three administrative/program directors and select the demographic descriptor for each.

#1: Title of Decision-Maker (CEO, ED, President, etc.): [Open-ended]

#2: Title of Decision-Maker (CEO, ED, President, etc.): [Open-ended]

#3: Title of Decision-Maker (CEO, ED, President, etc.): [Open-ended]

Answer Options:

- American Indian or Alaska Native
- Asian
- Black or African American
- Hispanic/Latinx
- Native Hawaiian or Pacific Islander
- Other Race
- White

Communities Your Organization Serves\*

Which 3 communities does your organization primarily serve? In other words, which 3 communities does your organization have specific programs for or make up the majority of your clients? Please select 3 from the list below.



#1: Answer Option

#2: Answer Option

#3: Answer Option

Answer Options:

- African American/Black Gay, Bisexual, or Other Same Gender Loving Men
- African American/Black Transwomen
- African American/Black Women
- African American/Black Community
- Hispanic/Latino Gay, Bisexual, or Other Same Gender Loving Men
- Hispanic/Latina Transwomen
- Hispanic/Latina Women
- Hispanics/Latinx Community
- Gay, Bisexual, or Other Same Gender Loving Men
- People Living with HIV/AIDS
- People of Trans Experience
- People Who Engage in Sex Work
- People Who Use Drugs
- People Who Experience Homelessness
- People Currently or Formerly Incarcerated
- Refugees or Immigrants
- Youth / Young Adults (13-30 years old)
- Not Listed: \_\_\_\_\_
- None of the Above

How did you learn about this funding opportunity?\* (check all that apply)

- Community-Based Organization or Partner
- COMPASS Coordinating Center (Emory University Rollins School of Public Health, Southern AIDS Coalition, University of Houston Graduate College of Social Work)
- COMPASS Initiative Website ([www.gileadcompass.com](http://www.gileadcompass.com))
- Conference or Public Event
- Press Release or News Article
- Social Media
- Word of Mouth
- Website Other than the COMPASS Initiative
- Other, please specify: \_\_\_\_\_

Does your organization **currently** receive grant funding from another COMPASS Coordinating Center?\*

- Yes

- No
- If yes:
  - Name of Coordinating Center
  - Type of support

Application Narrative\* (350 word limit)

We would like to learn about your organization. Please answer the following questions:

1. Tell us about your organization: What key services are offered? What is your organization great at? In what areas does your organization have room for growth? How does your organization empower people living with HIV and/or people with lived experience to lead?
2. Why is your organization interested in participating in LEARN Harm Reduction?
3. Does your organization have any experience with harm reduction? If so, please describe. \*Note: While we ask about your organization's experience, it is not an expectation that you have experience. This is to help us understand your experience and adjust our curriculum accordingly.
4. A core component of LEARN Harm Reduction is an opportunity to take action in the form of a project. At this stage, you do not need to have a project plan, and your initial plans will likely change as you learn from others. However, please pick a project track, tell us why you chose this track, and tell us your ideas for a project within this track.
 

[Drop down menu with project tracks]

  - 4.1. **Within Your Organization: Hiring and Onboarding People with Lived Experience.** This track is focused on changing your organization's structures to be more supportive of employing people living with HIV or people who use drugs.
  - 4.2. **Movement Across Organizations: Collaborating and Coordinating with Community Partners.** This track is focused on developing partnerships across organizations to organize for lasting change in your community that better supports the health and wellbeing of people living with HIV or people who use drugs.
  - 4.3. **Within Your Organization: Creating Structures that Support Staff and Client Wellbeing.** This track is focused on designing and implementing mechanisms in your organization to support the health and wellbeing of both staff and clients.
5. What are the names and email addresses of the two staff members who will participate in LEARN Harm Reduction?
6. Is there anything we have not asked that you would like for us to know about your organization?

---

### Program Commitments and Obligations Form\*

LEARN Harm Reduction is an intensive, collaborative program in which participant learning is based off of virtual cohort and individual coaching sessions, as well as from other program participants, so we ask that applicants prepare to make the following commitments:

- We understand that this intensive, collaborative engagement lasting 6 months.
- If selected, we will actively participate in all aspects of the program through completion.
- We understand that one staff member will serve as the lead for our team and as the point of contact.
- Barring any extraordinary circumstances, our COMPLETE team will be available for all scheduled sessions.
- We commit to coming prepared for each convening, and will engage with our peers between sessions, as appropriate, to advance our work.
- We commit to sharing what we learn in LEARN with other organizations, our organization and the broader community via updates at staff meetings, introduction of new practices, conference presentations, blogs and other mechanisms.

Thank you for your application!  
We look forward to reviewing your submission.